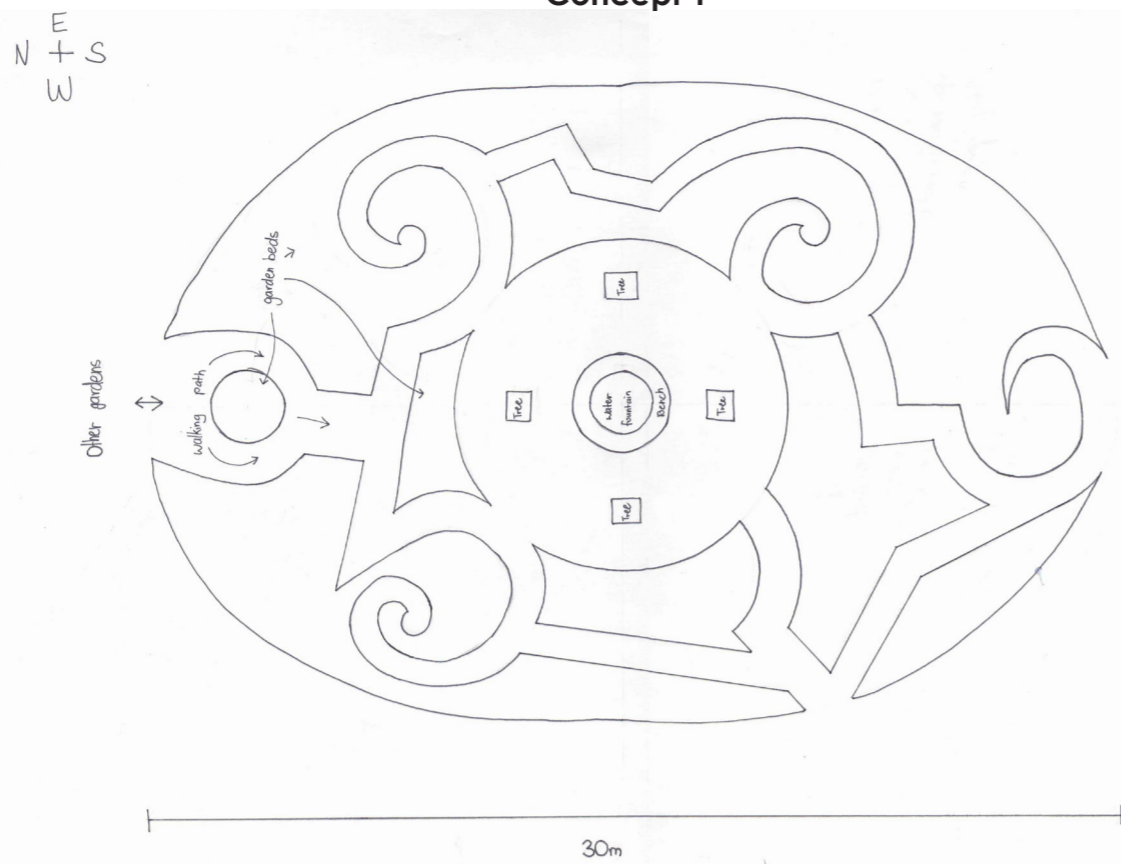
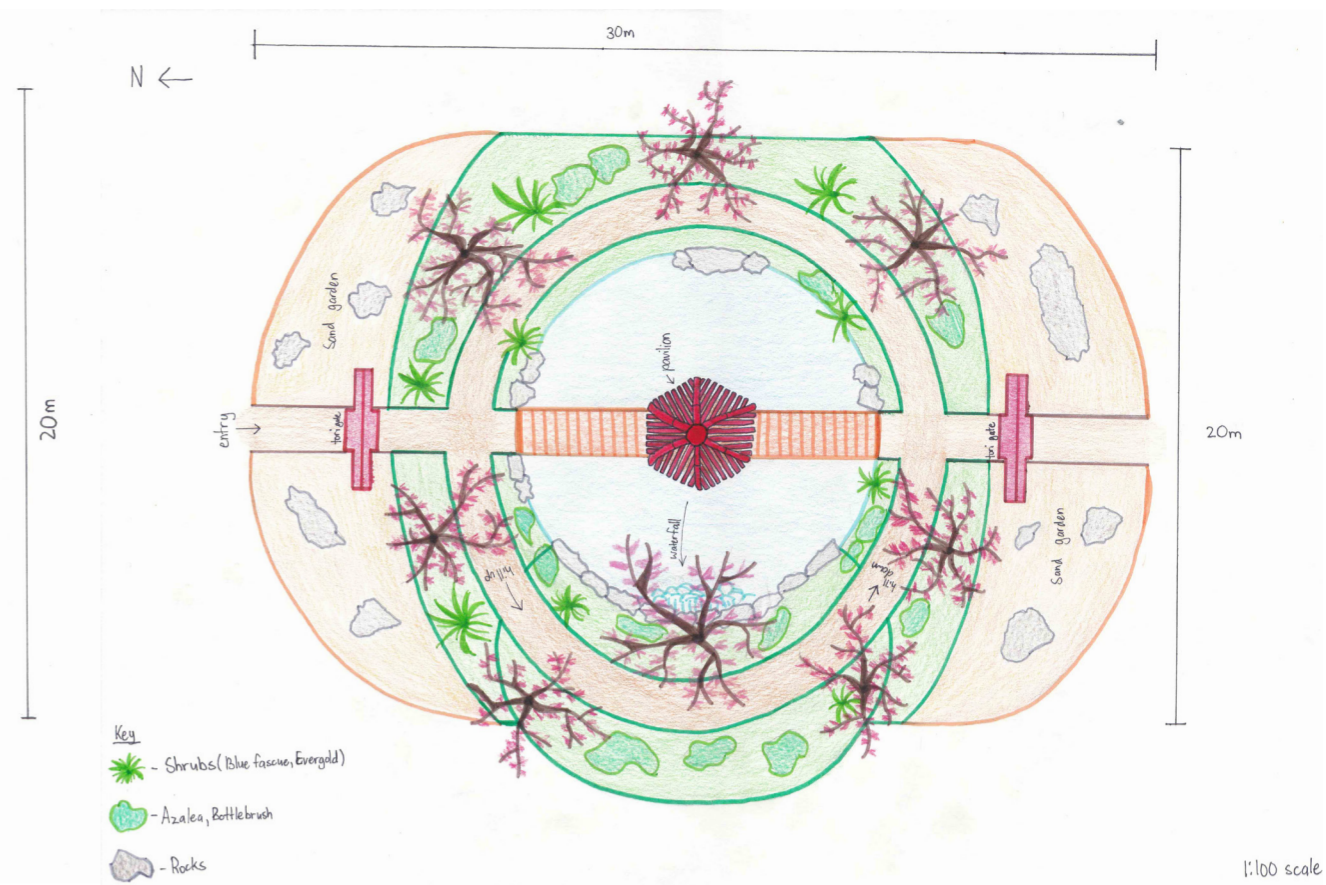


Concept 1



Concept 2



Design Brief

The design brief is to create another themed garden for the Arboretum's Gallery of Gardens. The garden is to represent Canberra's sister city in Japan, Nara, using traditional design principles of a Japanese garden and incorporate Australian plant natives.

Sisters' Garden

National Arboretum - Gallery of Gardens

By Mayumi Esteves

Architecture's Statement

The 'Sisters' Garden' is a Japanese inspired garden to represent the Japanese sister city of Canberra, Nara. The plants are a mix of Australian and Japanese natives to create a natural environment that represents the sisterly link. The choice of cherry blossom and Japanese maple trees allows the garden to contain a different colour palette every season. When entering the garden, you are greeted with a rock garden and a torii gate. In front of the gate is a pond with a bridge that leads to the main structure of the garden which is a floating pavilion that was inspired by the Ukimido pavilion in Nara. When on the pavilion, to the right is a small waterfall and a panoramic view of the entire garden can be seen. To the right of the torii gate is a mound that leads up to the top of the waterfall, where the garden can be viewed from a higher perspective. To the left of the torii gate is a path around the pond to allow visitors to view the pavilion framing the waterfall. The layout of the garden is mirrored to keep the same experience from both entrances.



Trees

Cherry Blossoms



Japanese Maple



Blue Fescue



Azalea



Evergold



Japanese Windflower



Bottlebrush



Shrubs

Flowers

