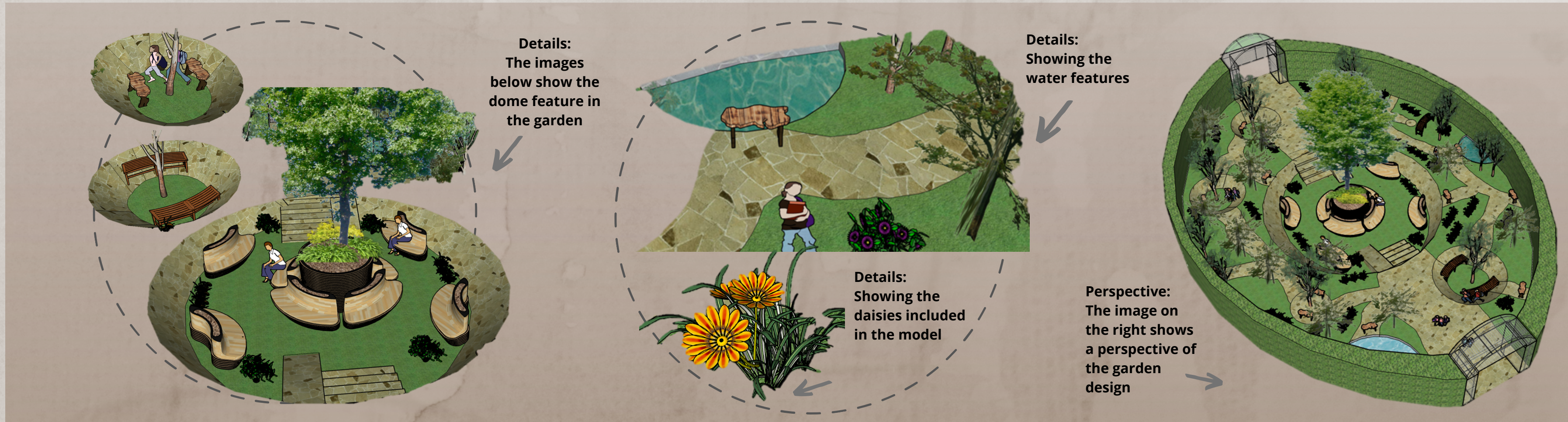




## DESIGN BRIEF

The design brief states that a New Garden for The National Arboretum of Canberra must be designed. This design is located within the Gallery of Gardens, at the south end of the amphitheater, and should utilize an organizing design principle throughout the layout. This new landscaped zone must also include a theme and message to relate to the pre-existing gardens while engaging Arboretum visitors.



# COVID-19 ARBORETUM GARDEN

As specified in the design brief, this new Gallery of Gardens landscape utilizes organic principles inspired by the layout of the Arboretum alongside incorporating circles as hub dome forms. These forms create an engaging garden environment that contrasts with the previous elevated garden design through lowered forms. In addition to upholding emphasis and interest, the dome elements create meaning and a theme of Covid-19 research, community struggles, and reflection.

Throughout the garden, there are a total of four dome areas lowered into the ground that acts as a circle as hubs. Utilizing these four domes composes meaning in the landscape and represents the developments in Covid-19 research alongside the number of existing vaccines available to the public. The other three circle forms located in the paving (not lowered into the ground) highlight the research that is occurring to try and eradicate the 21st-century pandemic. In addition to this, the garden represents the changing states of mind about the pandemic, as these circles appear as though they can be lowered into the ground like the other four domes.

The curved and organic pavement utilized in the design links the garden to forms in the Arboretum and overall connects the built aspects of infrastructure to the natural and curved forms of the garden's inclusion of trees and their connection to the earth (through tree roots). This theme of connection relates to how people were forced to separate from each other in covid isolation and the windy, uneven, and unpredictable pathway of the pandemic. The garden design further connects to the Covid theme through two small ponds that allow people to reflect on the pandemic and the people who struggled and/or lost their lives. However, the inclusion of bright daisies shows the hope and longing for covid to end and people's lifestyles to resume.

## DESIGN DEVELOPMENT

Image showing the view analysis

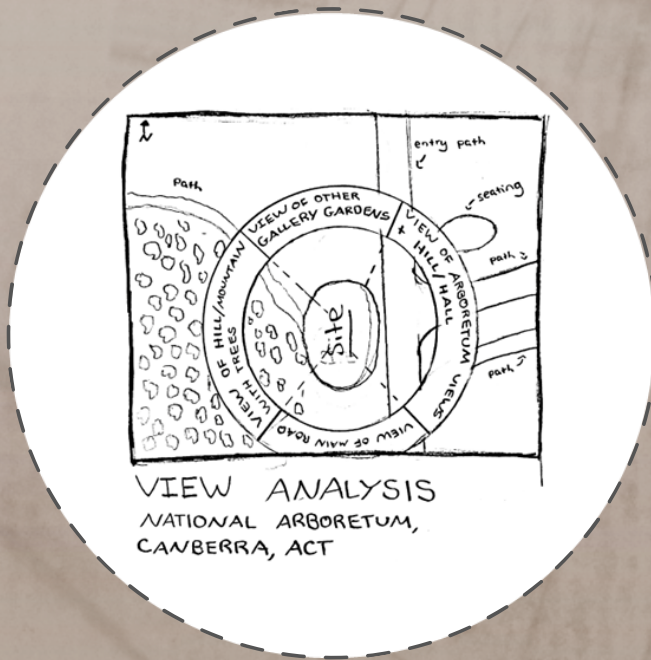


Image showing the site evaluation

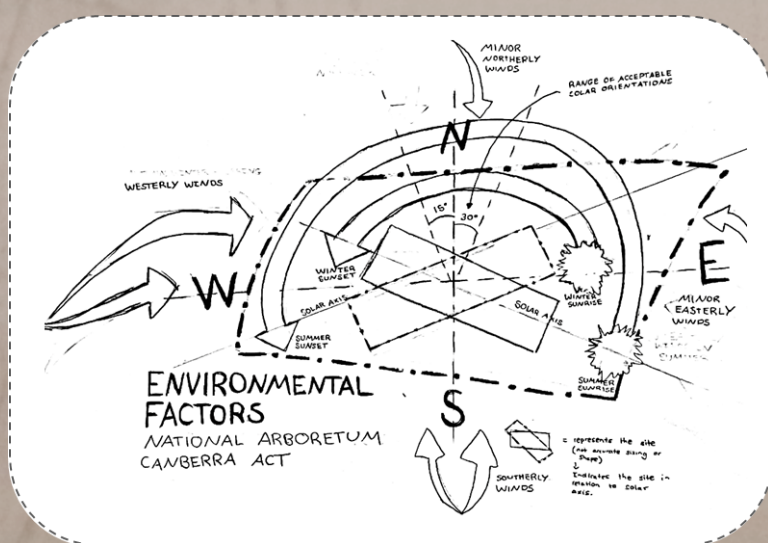
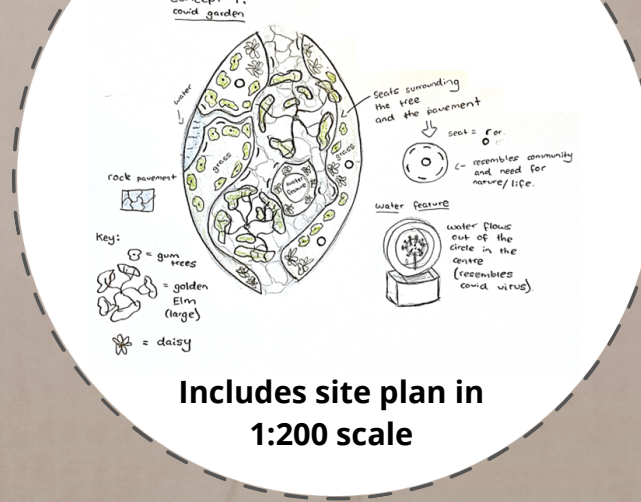
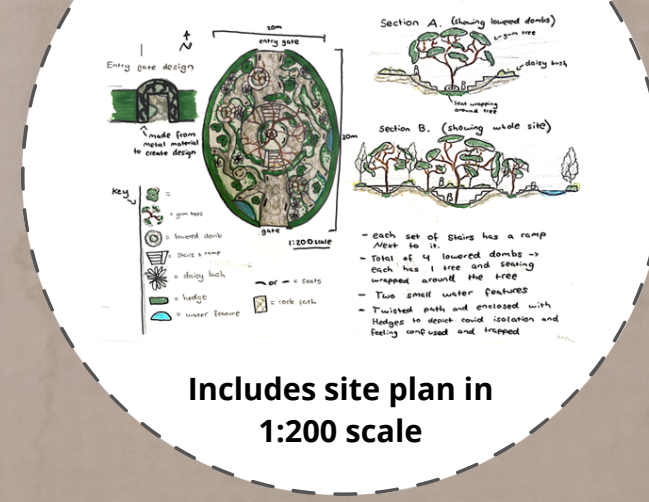


Image showing draft concept



Images showing the final concept sketch



Final design composition

